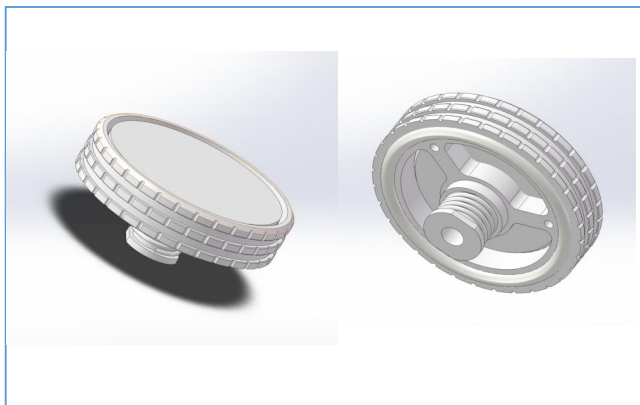


## MIV SERIES

### Ventilation Parts

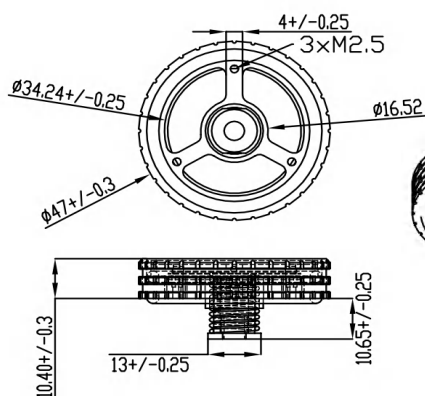
### Battery Pack Application

#### Metal 43 Metal Battery Pack Vent Valve

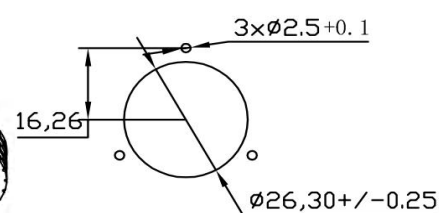


- >Maintain high airflow in large battery main pack and open
- >Equalize pressure and reduce condensation by allowing air to flow freely into and out of sealed large enclosures.
- >Simple and flat design meets any type of enclosures.The valve can be returned after opening it to release overpressure.
- >Keep Venting when there is under normal pressure change inside enclosure but waterproof at IP67.
- >IP67 protection class(1meters/30min.) and -40° C to +150° C operating temp.range.Best to use under the tough environment.
- >Installing on the side/top face of enclosures is effective for outdoor use.

### Drawing



### Assembly Recommendation



#### Screw Type Selection

#### Assembly Housing Design Recommendation

Housing Thickness 2~3mm	screw length 6mm
Housing Thickness 1mm	screw length 4mm

### Technical Data

Typical airflow	2.96l/min(dp=10kpa)
Opening Pressure (can be customized)	20kpa+/-5kpa
Degassing/venting Airflow L/s @ 300mbar	20
Enviromental performance	IEC529,2nd(Protection class): .IP67,IP69K IEC60068-2-1,2,14(Heat resistance):-40°C~+150°C IEC600-2-78(Humidity testing):85°.85%humidity-1000 hours Humidity freeze-High temperature,Hail impact test.

### Part no./Components

Part no.	Material						Sales unit
	① Housing	②Membrane	③O-ring	④Color		Mount hole	
MIV-43EX-MPS	AL	Micro Membrane	Silicone	Silver		26.3	100
MIV-43EX-MSUS	SUS						